

- NOTES**
1. ALL DIMENSIONS ARE IN METRES UNLESS NOTED OTHERWISE.
 2. DO NOT SCALE FROM THIS DRAWING.
 3. THIS DRAWING HAS BEEN BASED ON ORDINANCE SURVEY (OS) INFORMATION SUPPLIED BY LEICESTER CITY COUNCIL. DIMENSIONS SHOWN ARE MEASURED FROM OS MAPS.
 4. STATUTORY UNDERTAKER C2 INFORMATION HAVE NOT BEEN OBTAINED AT THIS STAGE. FURTHER ASSESSMENTS ARE TO BE MADE.
 5. THE DESIGN HAS BEEN COMPLETED USING LTN 120 GUIDANCE AND DOCUMENTATION.

- KEY:**
- PROPOSED KERB LINE
 - EXISTING OS MAP
 - HIGHWAY BOUNDARY
 - PROPOSED PEDESTRIAN FOOTWAY
 - PROPOSED SEGREGATED CYCLE LANE
 - PROPOSED SHARED FOOTCYCLEWAY
 - PROPOSED VERGE
 - PROPOSED RAISED TABLE
 - PROPOSED RAINWATER GARDEN/LOW LEVEL VEGETATION
 - PROPOSED BUS SHELTER

Healthy Streets
3G: 8582/ St Johns Roundabout

| Before | After | Difference |
|--------|-------|------------|
| 27 | 40 | +13 |



DRAFT

| | | | | | |
|------|----------|-------------|-------------|----|---------|
| PROJ | 28/11/22 | FIRST ISSUE | ISS | MS | MS |
| REV | | DATE | DESCRIPTION | BY | CHK APP |



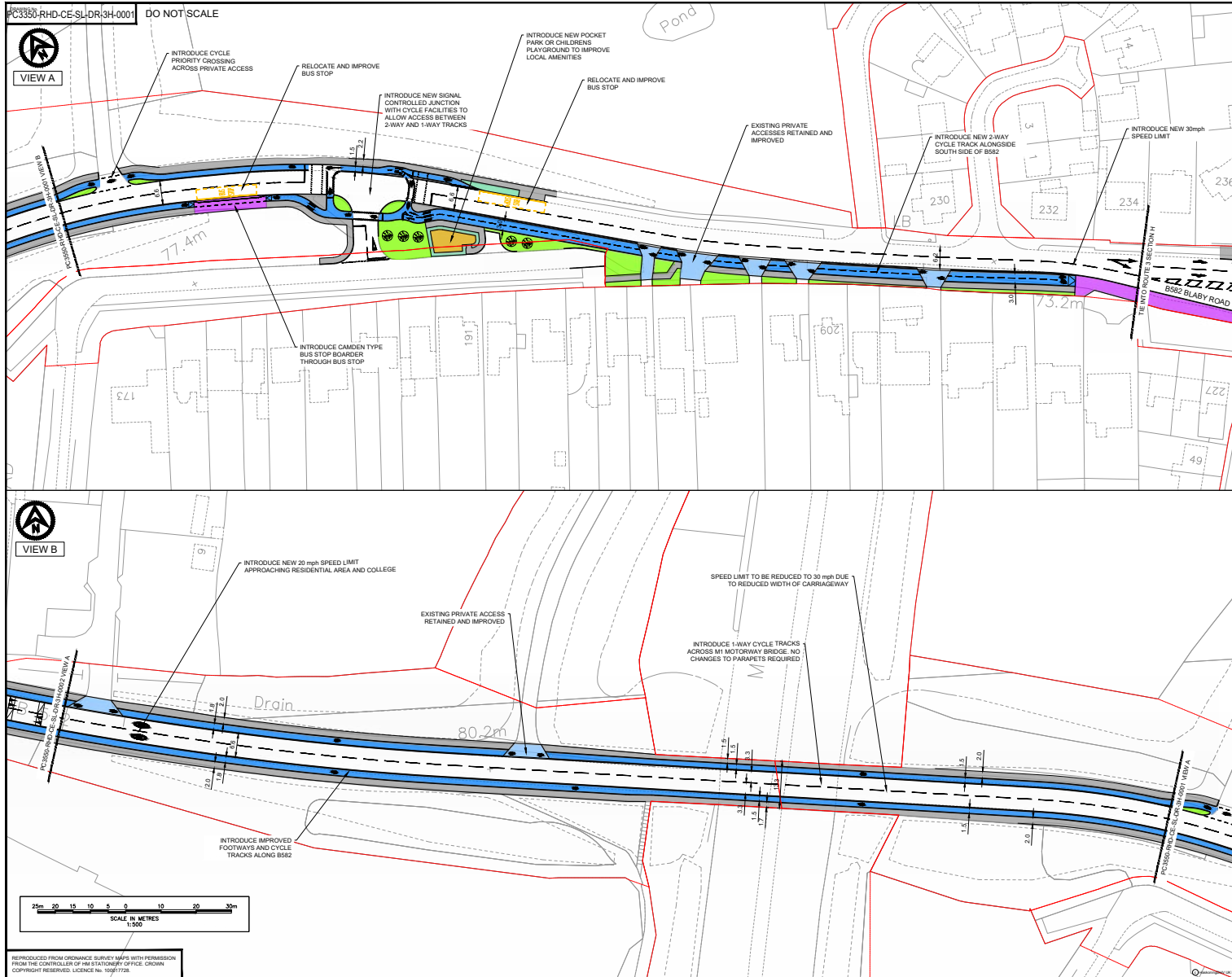
PROJECT
Leicestershire LCWIP Design

TITLE
LCWIP CONCEPTUAL DESIGN SECTION 3G



| | | | | | | | | | |
|------|----------|-------|------------|-------------|-----------------------------|------------|----|-------------|-----|
| DATE | 28/11/22 | SCALE | 1:200 @ A1 | PROJECT NO. | PC3360-RHD-CE-SL-DR-3G-0001 | REVISED BY | S3 | APPROVED BY | P01 |
|------|----------|-------|------------|-------------|-----------------------------|------------|----|-------------|-----|

INTRODUCED FROM ORDINANCE SURVEY MAPS WITH PERMISSION FROM THE CONTROLLER OF HIS STATUTORY OFFICE. CROWN COPYRIGHT RESERVED. LICENCE NO: 100017726



NOTES

- ALL DIMENSIONS ARE IN METRES UNLESS NOTED OTHERWISE.
- DO NOT SCALE FROM THIS DRAWING.
- THIS DRAWING HAS BEEN BASED ON ORDNANCE SURVEY (OS) INFORMATION SUPPLIED BY LEICESTER CITY COUNCIL. DIMENSIONS SHOWN ARE MEASURED FROM OS MARKS.
- STATUTORY UNDERTAKER C2 INFORMATION HAS NOT BEEN OBTAINED AT THIS STAGE. FURTHER ASSESSMENTS ARE TO BE MADE.
- THE DESIGN HAS BEEN COMPLETED USING LTN 1/20 GUIDANCE AND DOCUMENTATION.

KEY:

- PROPOSED KERB LINE
- EXISTING OS MAP
- HIGHWAY BOUNDARY
- PROPOSED PEDESTRIAN FOOTWAY
- PROPOSED SEGREGATED CYCLE LANE
- PROPOSED SHARED FOOT/CYCLEWAY
- PROPOSED VERGE
- PROPOSED RAISED TABLE
- PROPOSED RAINWATER GARDEN/Low LEVEL VEGETATION
- PROPOSED POCKET PARK OR CHILDRENS PLAY AREA

Healthy Streets

3H: Blaby Road/Mill Hill/Desford Road

| Before | After | Difference |
|--------|-------|------------|
| 13 | 26 | +13 |

DRAFT

| | | | | | |
|-----|----------|-------------|-----|-----|-----|
| REV | DATE | DESCRIPTION | BY | CHK | APP |
| 01 | 01.11.24 | FIRST ISSUE | BBB | MS | MS |

REVISIONS:

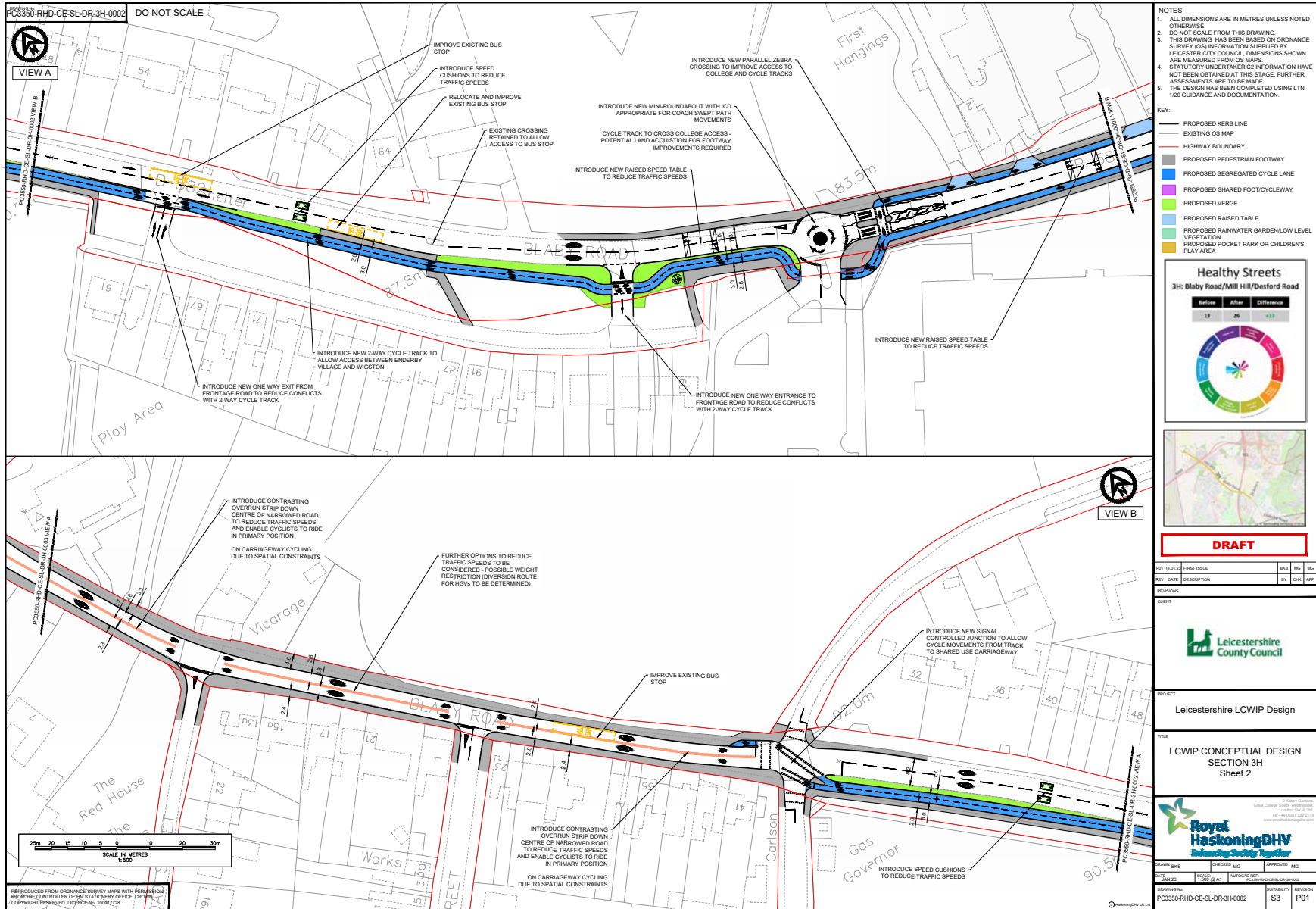
CLIENT: **Leicestershire County Council**

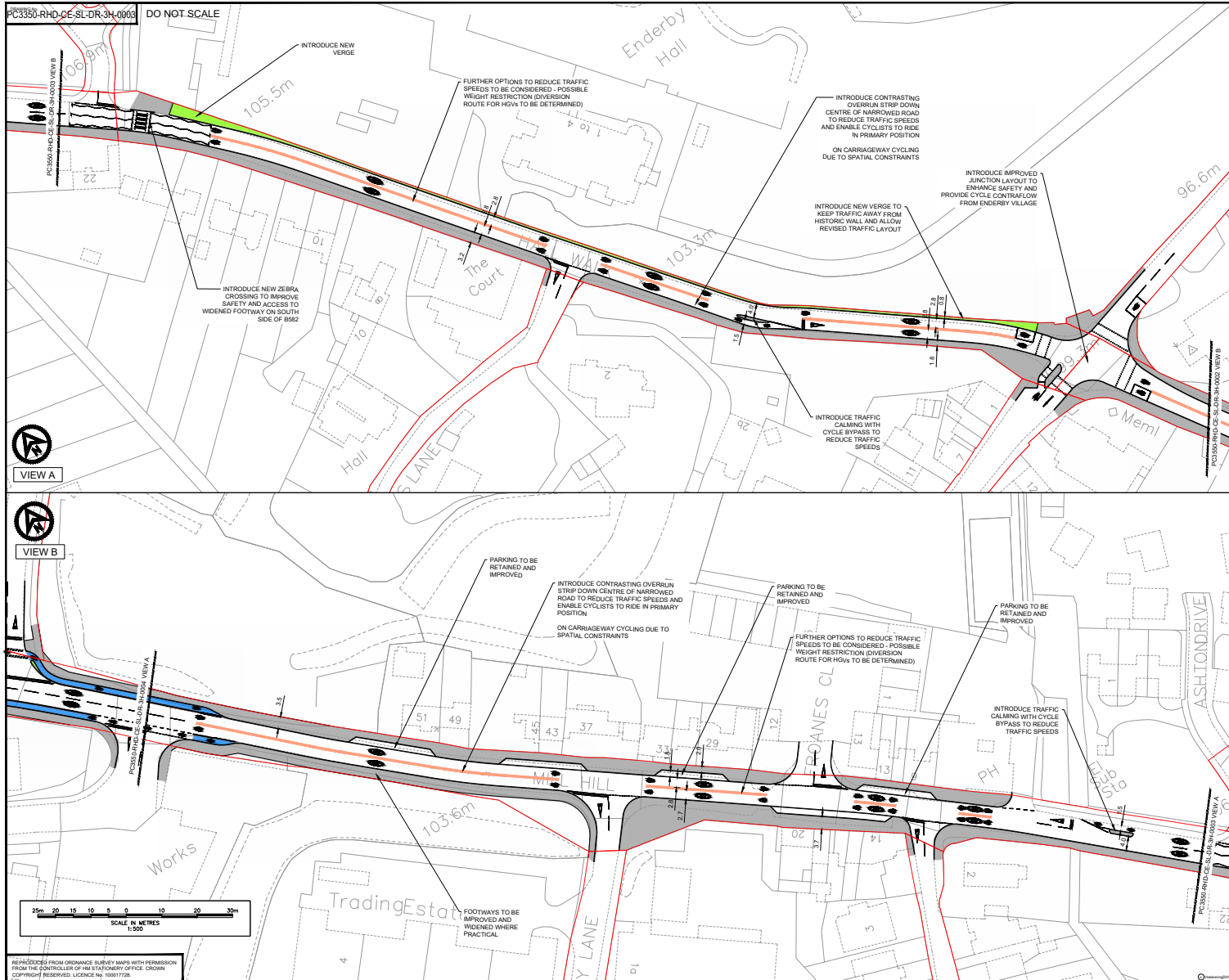
PROJECT: **Leicestershire LCWIP Design**

TITLE: **LCWIP CONCEPTUAL DESIGN SECTION 3H Sheet 1**

Royal HaskoningDHV
Engineering Design Together

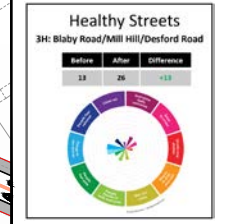
| | | | | | |
|-------------|-----------------------------|-----------|------------|--------------|-----------------------------|
| DESIGN | BBB | DESIGNED | MS | APPROVED | MS |
| CHECK | MS | SCALE | 1:500 @ A1 | AUTOCAD FILE | PC3350-RHD-CE-SL-DR-3H-0001 |
| DATE | 01.11.24 | SCALE | 1:500 @ A1 | AUTOCAD FILE | PC3350-RHD-CE-SL-DR-3H-0001 |
| PROJECT NO. | PC3350-RHD-CE-SL-DR-3H-0001 | SHEET NO. | S3 | TOTAL SHEETS | P01 |





- NOTES**
1. ALL DIMENSIONS ARE IN METRES UNLESS NOTED OTHERWISE.
 2. DO NOT SCALE FROM THIS DRAWING.
 3. THIS DRAWING HAS BEEN BASED ON ORDNANCE SURVEY (OS) INFORMATION SUPPLIED BY LEICESTER CITY COUNCIL. DIMENSIONS SHOWN ARE MEASURED FROM OS MARKS.
 4. STATUTORY UNDERTAKER (SU) INFORMATION HAS NOT BEEN OBTAINED AT THIS STAGE. FURTHER ASSESSMENTS ARE TO BE MADE.
 5. THE DESIGN HAS BEEN COMPLETED USING LTN 1/20 GUIDANCE AND DOCUMENTATION.

- KEY:**
- PROPOSED KERB LINE
 - EXISTING OS MAP
 - HIGHWAY BOUNDARY
 - PROPOSED PEDESTRIAN FOOTWAY
 - PROPOSED SEGREGATED CYCLE LANE
 - PROPOSED SHARED FOOTCYCLEWAY
 - PROPOSED VERGE
 - PROPOSED RAISED TABLE
 - PROPOSED RAINWATER GARDEN/LOW LEVEL VEGETATION
 - PROPOSED POCKET PARK OR CHILDRENS PLAY AREA



DRAFT

| | | | | | |
|-----|----------|-------------|-----|-----|-----|
| REV | DATE | DESCRIPTION | BY | CHK | APP |
| 01 | 01.11.22 | FIRST ISSUE | HRB | MS | MS |

REVISIONS



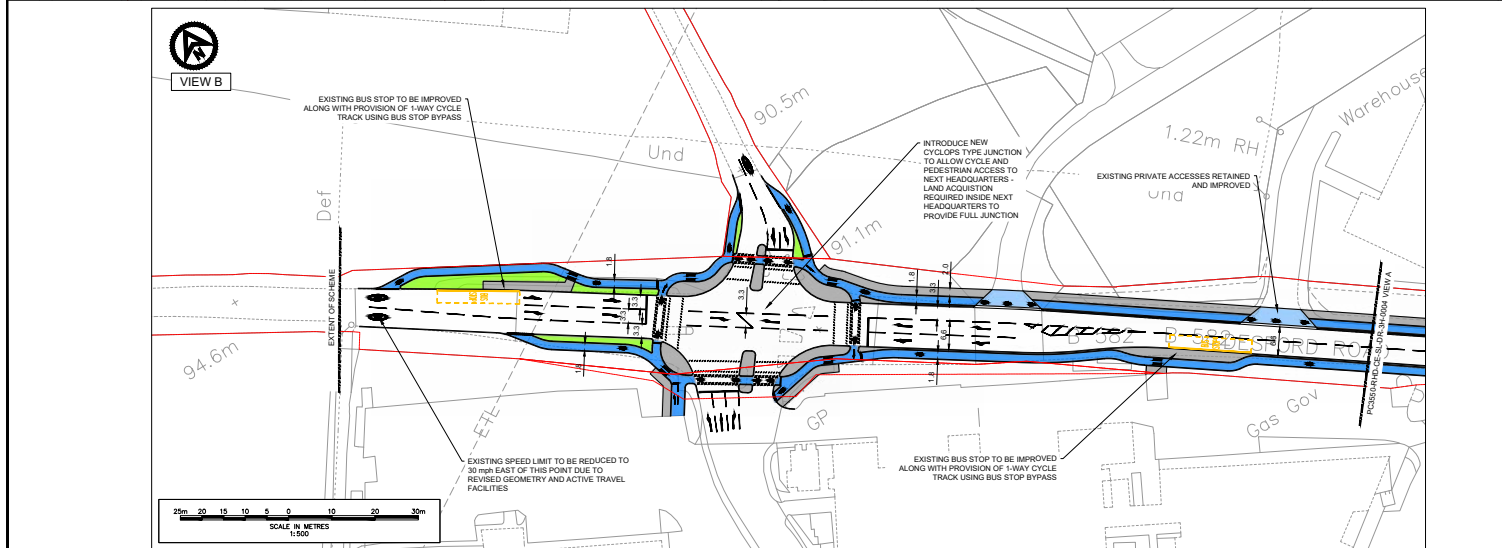
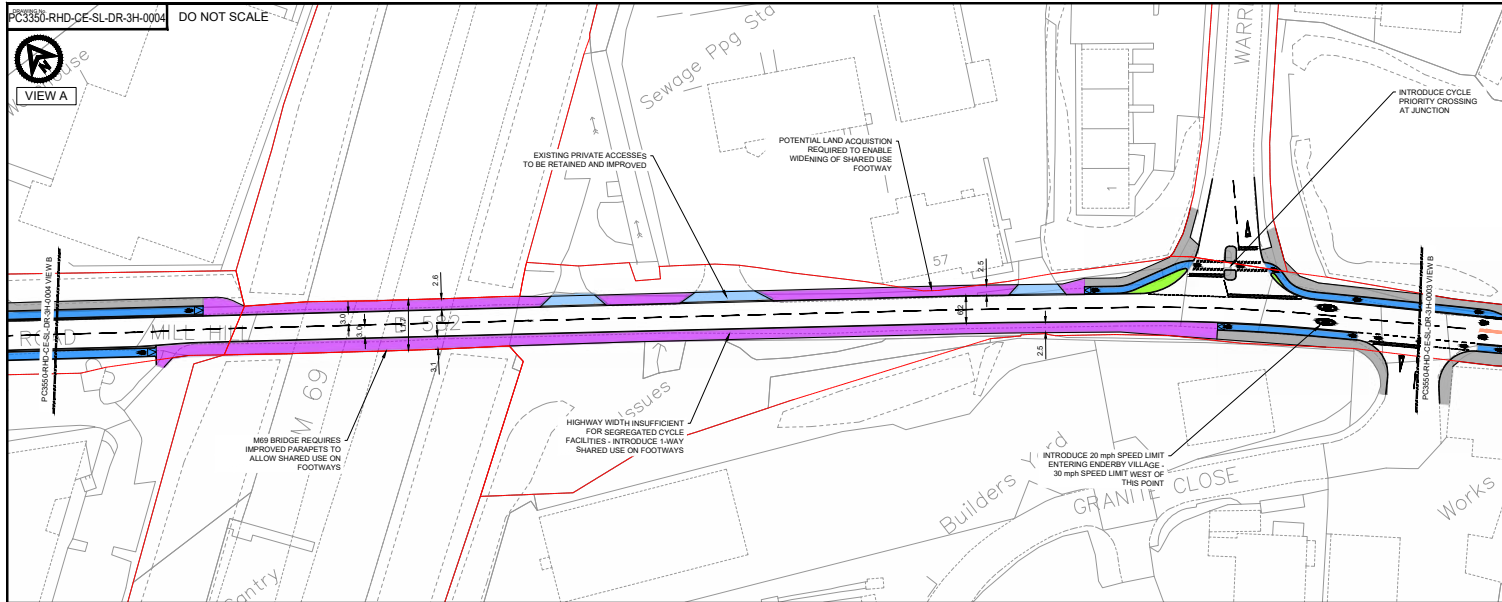
PROJECT
Leicestershire LCWIP Design

TITLE
LCWIP CONCEPTUAL DESIGN
SECTION 3H
Sheet 3



| | | | |
|-----------------------------|---------------------|-----------------------------|----------|
| DATE | SCALE | AUTOCAD FILE | APPROVAL |
| 01.11.22 | 1:200 @ A1 | PC3350-RHD-CE-SL-DR-3H-0003 | MS |
| PROJECT NO. | PROJECT DESCRIPTION | REVISION NO. | |
| PC3350-RHD-CE-SL-DR-3H-0003 | S3 | P01 | |

REPRODUCED FROM ORDNANCE SURVEY MAPS WITH PERMISSION FROM THE CONTROLLER OF HIS STATUTORY OFFICE. ©CROWN COPYRIGHT RESERVED. LICENCE NO. 100017258



REPRODUCED FROM ORDNANCE SURVEY MAPS WITH PERMISSION FROM THE CONTROLLER OF HER MAJESTY'S OFFICE. ©CROWN COPYRIGHT RESERVED. LICENCE NO. 100017258

- NOTES**
1. ALL DIMENSIONS ARE IN METRES UNLESS NOTED OTHERWISE.
 2. DO NOT SCALE FROM THIS DRAWING.
 3. THIS DRAWING HAS BEEN BASED ON ORDNANCE SURVEY (OS) INFORMATION SUPPLIED BY LEICESTER CITY COUNCIL. DIMENSIONS SHOWN ARE MEASURED FROM OS MARKS.
 4. STATUTORY UNDERTAKER C2 INFORMATION HAVE NOT BEEN OBTAINED AT THIS STAGE. FURTHER ASSESSMENTS ARE TO BE MADE.
 5. THE DESIGN HAS BEEN COMPLETED USING LTN 1/20 GUIDANCE AND DOCUMENTATION.

- KEY:**
- PROPOSED KERB LINE
 - - - EXISTING OS MAP
 - HIGHWAY BOUNDARY
 - PROPOSED PEDESTRIAN FOOTWAY
 - PROPOSED SEGREGATED CYCLE LANE
 - PROPOSED SHARED FOOT/CYCLEWAY
 - PROPOSED VERGE
 - PROPOSED RAISED TABLE
 - PROPOSED RAINWATER GARDEN/Low LEVEL VEGETATION
 - PROPOSED POCKET PARK OR CHILDRENS PLAY AREA



DRAFT

| | | | | | |
|-----|----------|-------------|----|-----|-----|
| REV | DATE | DESCRIPTION | BY | CHK | APP |
| 01 | 01.11.24 | FIRST ISSUE | MS | MS | MS |

REVISIONS:



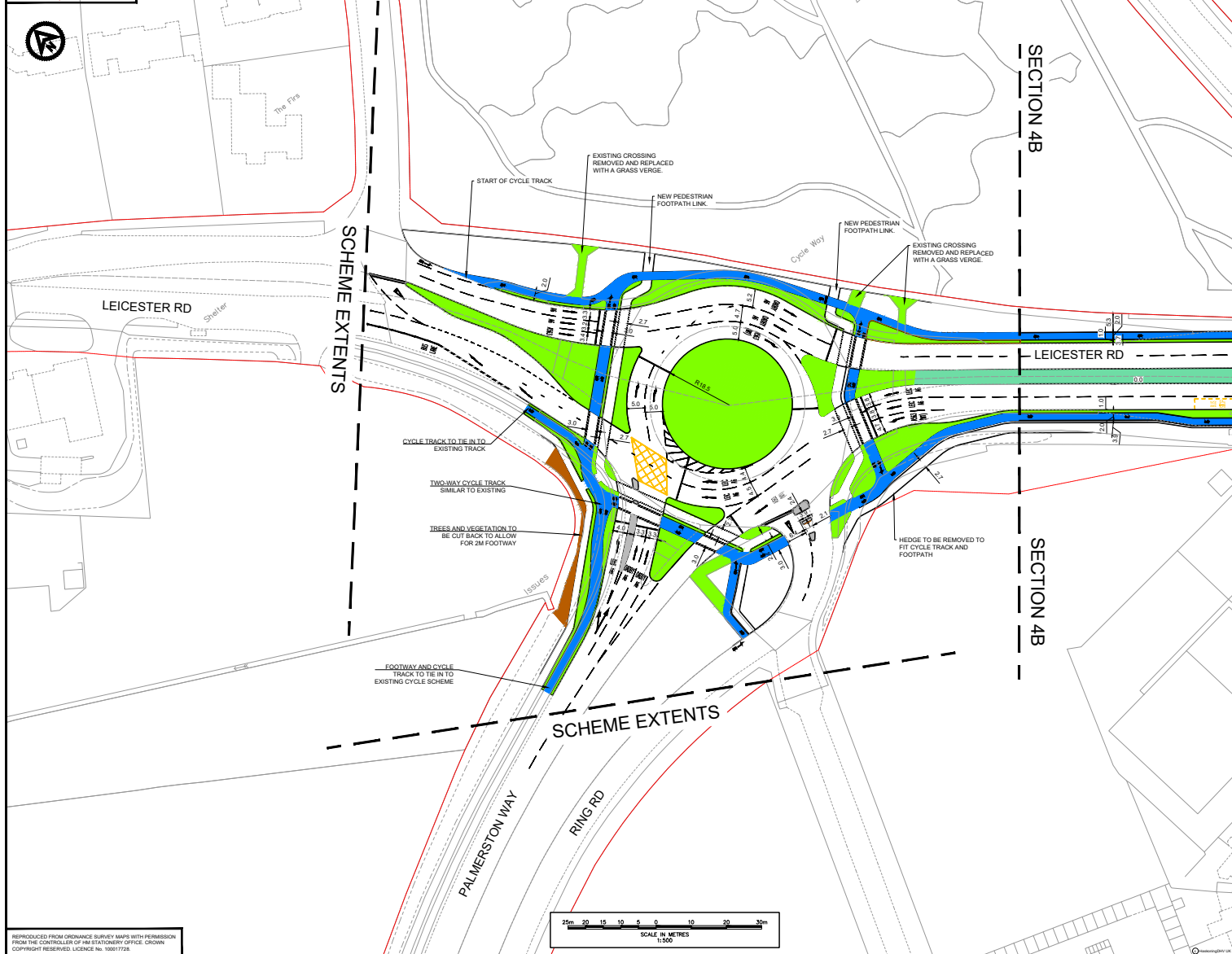
PROJECT:
Leicestershire LCWIP Design

TITLE:
LCWIP CONCEPTUAL DESIGN
SECTION 3H
Sheet 4



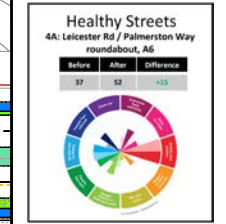
| | | | |
|----------|------------|-----------------------------|-------------|
| DATE | SCALE | AUTOCAD FILE | PROJECT NO. |
| 24/11/23 | 1:200 @ A1 | PC3350-RHD-CE-SL-DR-3H-0004 | S3 |

PC3350-RHD-CE-SL-DR-4A-0001 DO NOT SCALE



- NOTES
1. ALL DIMENSIONS ARE IN METRES UNLESS NOTED OTHERWISE.
 2. DO NOT SCALE FROM THIS DRAWING.
 3. THIS DRAWING HAS BEEN BASED ON ORDNANCE SURVEY (OS) INFORMATION SUPPLIED BY LEICESTER CITY COUNCIL. DIMENSIONS SHOWN ARE MEASURED FROM OS MAPS.
 4. STATUTORY UNDERTAKER C2 INFORMATION HAVE NOT BEEN OBTAINED AT THIS STAGE. FURTHER ASSESSMENTS ARE TO BE MADE.
 5. THE DESIGN HAS BEEN COMPLETED USING LTN 122 GUIDANCE AND DOCUMENTATION.
 6. NO TRAFFIC MODELING HAS BEEN CARRIED OUT FOR THE JUNCTIONS AND ROUNDABOUT FOR THIS CONCEPT DESIGN.

- KEY:
- PROPOSED KERB LINE
 - EXISTING OS MAP
 - HIGHWAY BOUNDARY
 - PROPOSED ASPHALT (BLACK TOP) TRAFFIC ISLAND
 - PROPOSED SEGREGATED CYCLE LANE
 - PROPOSED VERGE
 - PROPOSED RAINWATER GARDEN/LOW LEVEL VEGETATION
 - TREES / VEGETATION TO BE REMOVED



DRAFT

| REV | DATE | DESCRIPTION | BY | CHK | APP |
|-----|----------|-------------|-----|-----|-----|
| 01 | 07/09/22 | FIRST ISSUE | BBB | YZ | MS |

CLIENT



PROJECT

Leicestershire LCWIP Design

TITLE

LCWIP CONCEPTUAL DESIGN
SOL CORRIDOR 4
- SECTION 4A



| DATE | SCALE | AUTOCAD FILE | PROJECT NO. |
|----------|------------|--------------|-------------|
| 07/09/22 | 1:500 @ A1 | | |

DRAWN: BBB
 CHECKED: YZ
 APPROVED: MS
 SHEET NO: S3
 OF TOTALS: P01
 PROJECT NO: PC3350-RHD-CE-SL-DR-4A-0001

REPRODUCED FROM ORDNANCE SURVEY MAPS WITH PERMISSION FROM THE CONTROLLER OF HER MAJESTY'S STATIONERY OFFICE. ©CROWN COPYRIGHT RESERVED. LICENCE NO. 10007752.

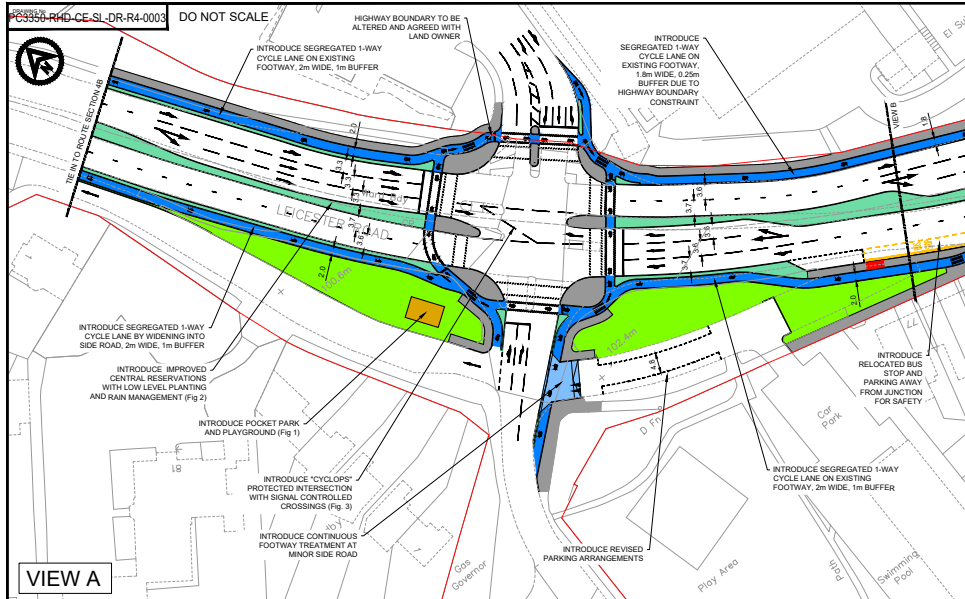


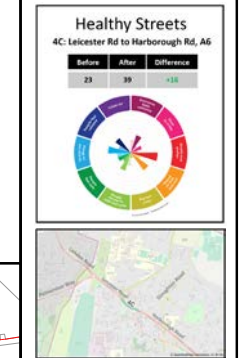
FIG 1 - EXAMPLE OF POCKET PARK
SOURCE: <https://www.ncl.ac.uk/press/articles/archive/2017/11/pocketpark/>
ACCESSED ON 18/08/22



FIG 2 - EXAMPLE OF LOW-LEVEL VEGETATION ON THE HIGHWAY
SOURCE: <https://www.courtenay.ca/EN/main/community/downtown-revitalization/5th-street-complete-street/5th-street-rain-garden.html>
ACCESSED ON 18/08/22

- NOTES
1. ALL DIMENSIONS ARE IN METRES UNLESS NOTED OTHERWISE.
 2. DO NOT SCALE FROM THIS DRAWING.
 3. THIS DRAWING HAS BEEN BASED ON ORDNANCE SURVEY (OS) INFORMATION SUPPLIED BY LEICESTER CITY COUNCIL. DIMENSIONS SHOWN ARE MEASURED FROM OS MAPS.
 4. STATUTORY UNDERTAKER C2 INFORMATION HAVE NOT BEEN OBTAINED AT THIS STAGE. FURTHER ASSESSMENTS ARE TO BE MADE.
 5. THE DESIGN HAS BEEN COMPLETED USING LTN 1/20 GUIDANCE AND DOCUMENTATION.

- KEY:
- PROPOSED KERB LINE
 - EXISTING OS MAP
 - HIGHWAY BOUNDARY
 - PROPOSED PEDESTRIAN FOOTWAY
 - PROPOSED SEGREGATED CYCLE LANE
 - PROPOSED VERGE
 - PROPOSED RAISED TABLE
 - PROPOSED RAINWATER GARDEN/ LOW LEVEL VEGETATION
 - PROPOSED POCKET PARK
 - PROPOSED BUS SHELTER



DRAFT

| REV | DATE | DESCRIPTION | BY | CHK | APP |
|-----|----------|-------------|-----|-----|-----|
| 001 | 14/09/22 | FIRST ISSUE | BBB | YZ | MS |



PROJECT
Leicestershire LCWIP Desgin

TITLE
LCWIP CONCEPTUAL DESIGN - SECTION 4C

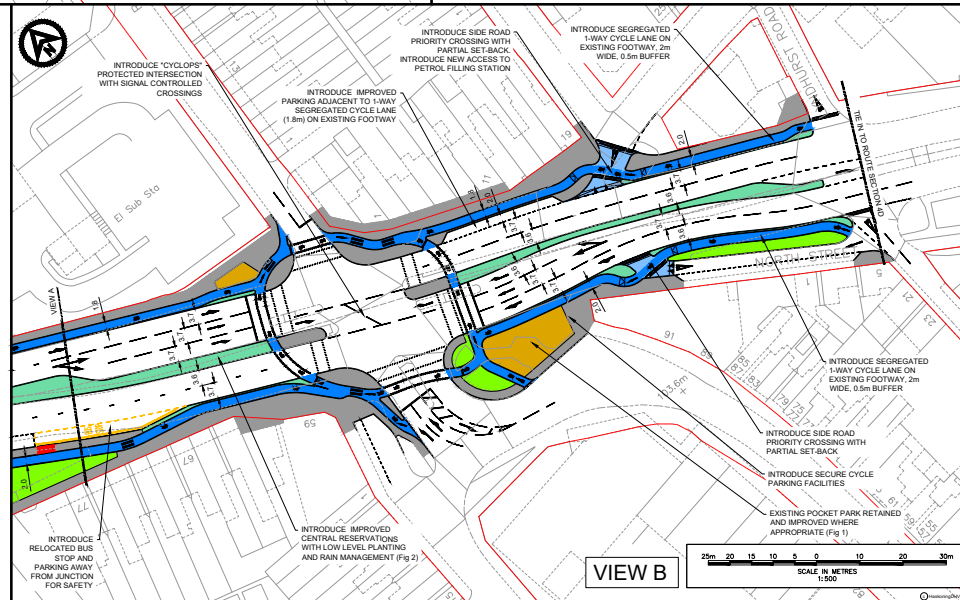


| DATE | SCALE | PROJECT NO. | PROJECT NAME |
|----------|------------|-------------|----------------|
| 14/09/22 | 1:500 @ A1 | PC3350-RHD | LEICESTER ROAD |

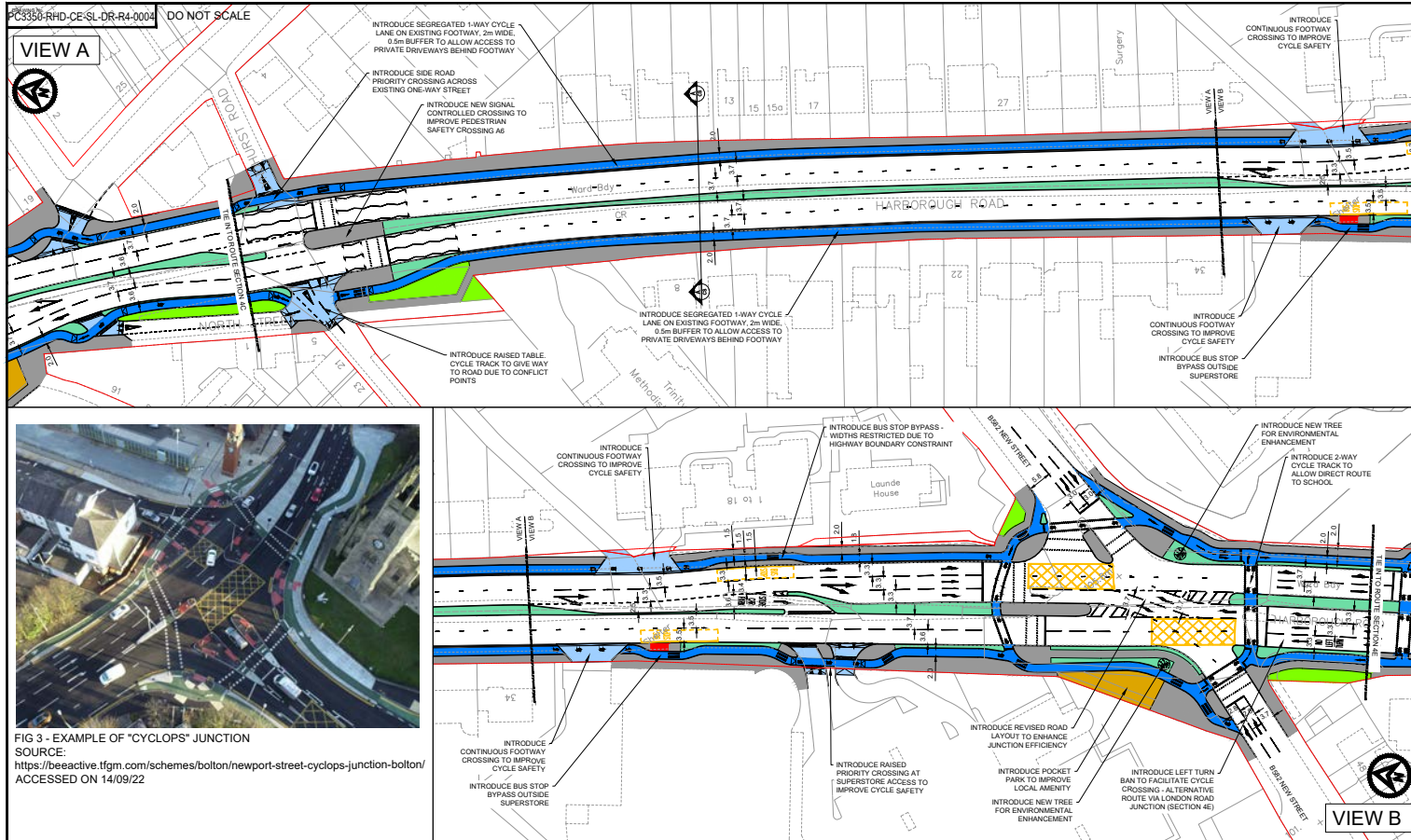
PROJECT NO. PC3350-RHD-CE-SL-DR-R4-0003
SHEET NO. S3
PAGE NO. P01



FIG 3 - EXAMPLE OF "CYCLOPS" JUNCTION
SOURCE: <https://beeactive.tfgm.com/schemes/bolton/newport-street-cyclops-junction-bolton/>
ACCESSED ON 14/09/22



REPRODUCED FROM ORDNANCE SURVEY MAPS WITH PERMISSION FROM THE CONTROLLER OF HER MAJESTY'S STATIONERY OFFICE. ©2009. COPYRIGHT RESERVED. LICENCE NO. 10001752.



- NOTES**
1. ALL DIMENSIONS ARE IN METRES UNLESS NOTED OTHERWISE.
 2. DO NOT SCALE FROM THIS DRAWING.
 3. THIS DRAWING HAS BEEN BASED ON ORDNANCE SURVEY (OS) INFORMATION SUPPLIED BY LEICESTER CITY COUNCIL. DIMENSIONS SHOWN ARE MEASURED FROM OS MAPS.
 4. STATUTORY UNDERTAKER C2 INFORMATION HAS NOT BEEN OBTAINED AT THIS STAGE. FURTHER ASSESSMENTS ARE TO BE MADE.
 5. THE DESIGN HAS BEEN COMPLETED USING LTN 1/20 GUIDANCE AND DOCUMENTATION.
- KEY:**
- PROPOSED KERB LINE
 - EXISTING OS MAP
 - HIGHWAY BOUNDARY
 - PROPOSED PEDESTRIAN FOOTWAY
 - PROPOSED SEGREGATED CYCLE LANE
 - PROPOSED VERGE
 - PROPOSED RAISED TABLE
 - PROPOSED RAINWATER GARDEN/LOW LEVEL VEGETATION
 - PROPOSED POCKET PARK
 - PROPOSED BUS SHELTER
 - PROPOSED TREE

Healthy Streets
4D: Harborough Rd, A6

| Before | After | Difference |
|--------|-------|------------|
| 24 | 49 | +25 |

DRAFT

| REV | DATE | DESCRIPTION | BY | CHK | APP |
|-----|----------|-------------|-----|-----|-----|
| 01 | 20.09.22 | FIRST ISSUE | BBB | YZ | MS |

REVISIONS:

CLIENT:

FIG 3 - EXAMPLE OF "CYCLOPS" JUNCTION
SOURCE: <https://beactive.tfgm.com/schemes/bolton/newport-street-cyclops-junction-bolton/>
ACCESSED ON 14/09/22

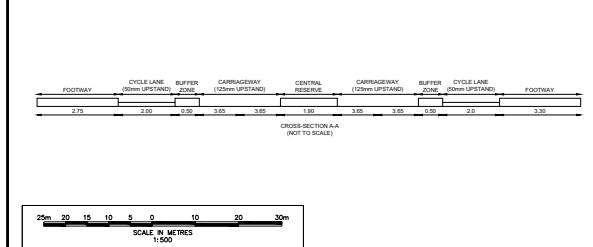


FIG 1 - EXAMPLE OF POCKET PARK
SOURCE: <https://www.ndc.ac.uk/press/articles/archive/2017/11/pocketpark/>
ACCESSED ON 18/08/22



FIG 2 - EXAMPLE OF LOW-LEVEL VEGETATION ON THE HIGHWAY
SOURCE: <https://www.courtenay.co.uk/main/community/downtown-revitalization/5th-street-complete-street/5th-street-rain-garden.html>
ACCESSED ON 18/08/22

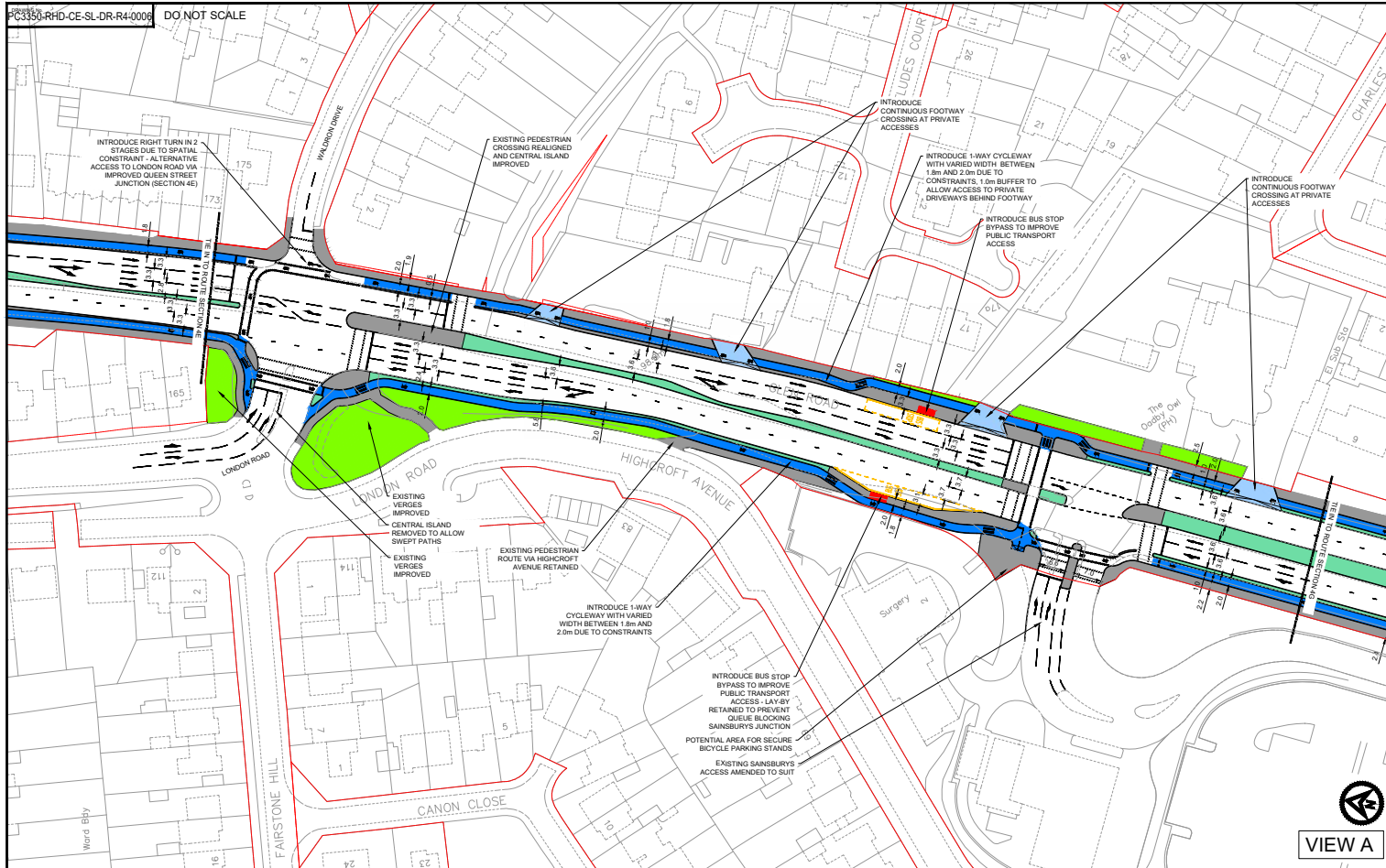
REPRODUCED FROM ORDNANCE SURVEY MAPS WITH PERMISSION FROM THE CONTROLLER OF HER MAJESTY'S STATIONERY OFFICE. ©CROWN COPYRIGHT RESERVED. LICENCE NO. 100017726

PROJECT: Leicestershire LCWIP Desgin

TITLE: LCWIP CONCEPTUAL DESIGN - SECTION 4D

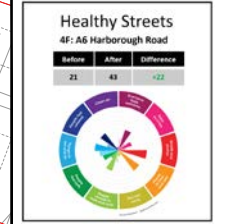
| REV | DATE | DESCRIPTION | BY | CHK | APP |
|-----|----------|-------------|-----|-----|-----|
| 01 | 20.09.22 | FIRST ISSUE | BBB | YZ | MS |

PROJECT NO: PC3350-RHD-CE-SL-DR-R4-0004
SHEET NO: S3
TOTAL SHEETS: P01



- NOTES**
1. ALL DIMENSIONS ARE IN METRES UNLESS NOTED OTHERWISE.
 2. DO NOT SCALE FROM THIS DRAWING.
 3. THIS DRAWING HAS BEEN BASED ON ORDNANCE SURVEY (OS) INFORMATION SUPPLIED BY LEICESTER CITY COUNCIL. DIMENSIONS SHOWN ARE MEASURED FROM OS MAPS.
 4. STATUTORY UNDERTAKER C2 INFORMATION HAVE NOT BEEN OBTAINED AT THIS STAGE. FURTHER ASSESSMENTS ARE TO BE MADE.
 5. THE DESIGN HAS BEEN COMPLETED USING LTN 1220 GUIDANCE AND DOCUMENTATION.

- KEY:**
- PROPOSED KERELINE
 - EXISTING OS MAP
 - HIGHWAY BOUNDARY
 - PROPOSED SEPARATED FOOTWAY
 - PROPOSED SEGREGATED CYCLE LANE
 - PROPOSED VERGE
 - PROPOSED RAISED TABLE
 - PROPOSED RAINWATER GARDEN/LOW LEVEL VEGETATION
 - PROPOSED BUS SHELTER



DRAFT

| | | | | | |
|-----|----------|-------------|-----|-----|-----|
| REV | DATE | DESCRIPTION | BY | CHK | APP |
| 01 | 04/10/22 | FIRST ISSUE | BBB | YZ | MS |

PREVIOUS:



PROJECT: Leicestershire LCWIP Desgin

TITLE: LCWIP CONCEPTUAL DESIGN - SECTION 4F



| | | | |
|----------|------------|-----------------------------|--------------|
| DATE | SCALE | PROJECT NO. | PROJECT NAME |
| 03/01/22 | 1:500 @ A1 | PC3350-RHD-CE-SL-DR-R4-0006 | S3 |
| DATE | SCALE | PROJECT NO. | PROJECT NAME |
| 04/10/22 | 1:500 @ A1 | PC3350-RHD-CE-SL-DR-R4-0006 | S3 |

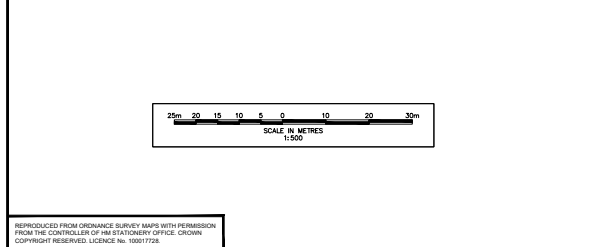
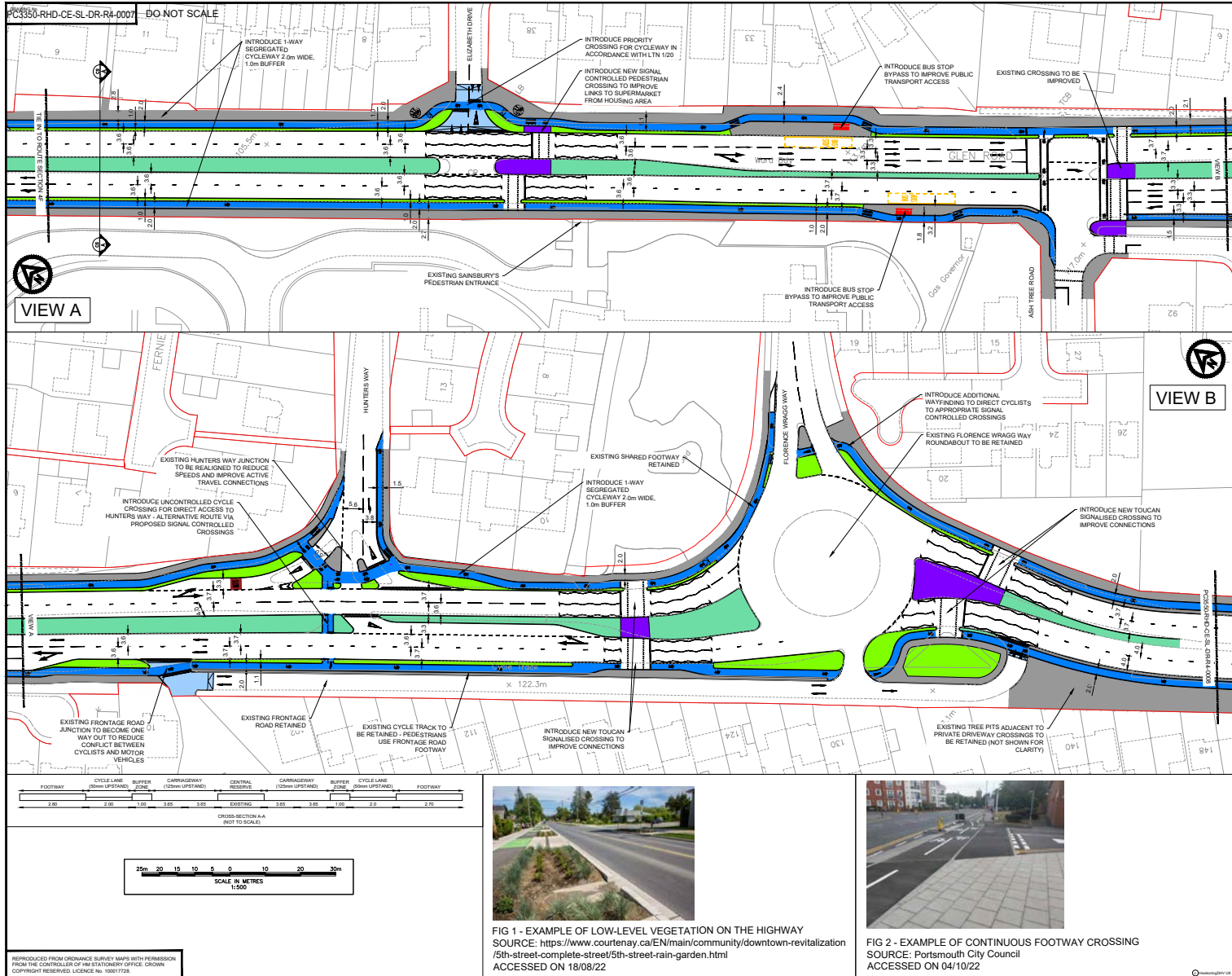


FIG 1 - EXAMPLE OF POCKET PARK
SOURCE: <https://www.nci.ac.uk/press/articles/archive/2017/11/pocketpark/>
ACCESSED ON 18/08/22



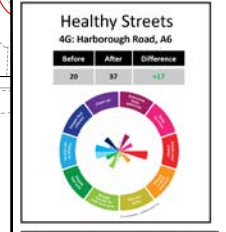
FIG 2 - EXAMPLE OF LOW-LEVEL VEGETATION ON THE HIGHWAY
SOURCE: <https://www.courtenay.ca/EN/main/community/downtown-revitalization/5th-street-complete-street/5th-street-rain-garden.html>
ACCESSED ON 18/08/22

REPRODUCED FROM ORDNANCE SURVEY MAPS WITH PERMISSION FROM THE CONTROLLER OF HIS STATUTORY OFFICE. ©CROWN COPYRIGHT RESERVED. LICENCE NO. 10001725.



- NOTES**
1. ALL DIMENSIONS ARE IN METRES UNLESS NOTED OTHERWISE.
 2. DO NOT SCALE FROM THIS DRAWING.
 3. THIS DRAWING HAS BEEN BASED ON ORDNANCE SURVEY (OS) INFORMATION SUPPLIED BY LEICESTER CITY COUNCIL. DIMENSIONS SHOWN ARE MEASURED FROM OS MAPS.
 4. STATUTORY UNDERTAKER C2 INFORMATION HAS NOT BEEN OBTAINED AT THIS STAGE. FURTHER ASSESSMENTS ARE TO BE MADE.
 5. THE DESIGN HAS BEEN COMPLETED USING LTN 1/20 GUIDANCE AND DOCUMENTATION.

- KEY:**
- PROPOSED KERB LINE
 - EXISTING OS MAP
 - HIGHWAY BOUNDARY
 - PROPOSED PEDESTRIAN FOOTWAY
 - PROPOSED SEGREGATED CYCLE LANE
 - PROPOSED VERGE
 - PROPOSED RAISED TABLE
 - PROPOSED RAINWATER GARDEN/ LOW LEVEL VEGETATION
 - PROPOSED SHARED FOOT AND CYCLEWAY
 - PROPOSED BUS SHELTER



DRAFT

| | | | | | |
|-----|----------|-------------|----|-----|-----|
| REV | DATE | DESCRIPTION | BY | CHK | APP |
| 01 | 08/10/22 | FIRST ISSUE | HW | YZ | MS |

CLIENT



PROJECT
Leicestershire LCWIP Design

TITLE
LCWIP CONCEPTUAL DESIGN - SECTION 4G (SHEET 1)

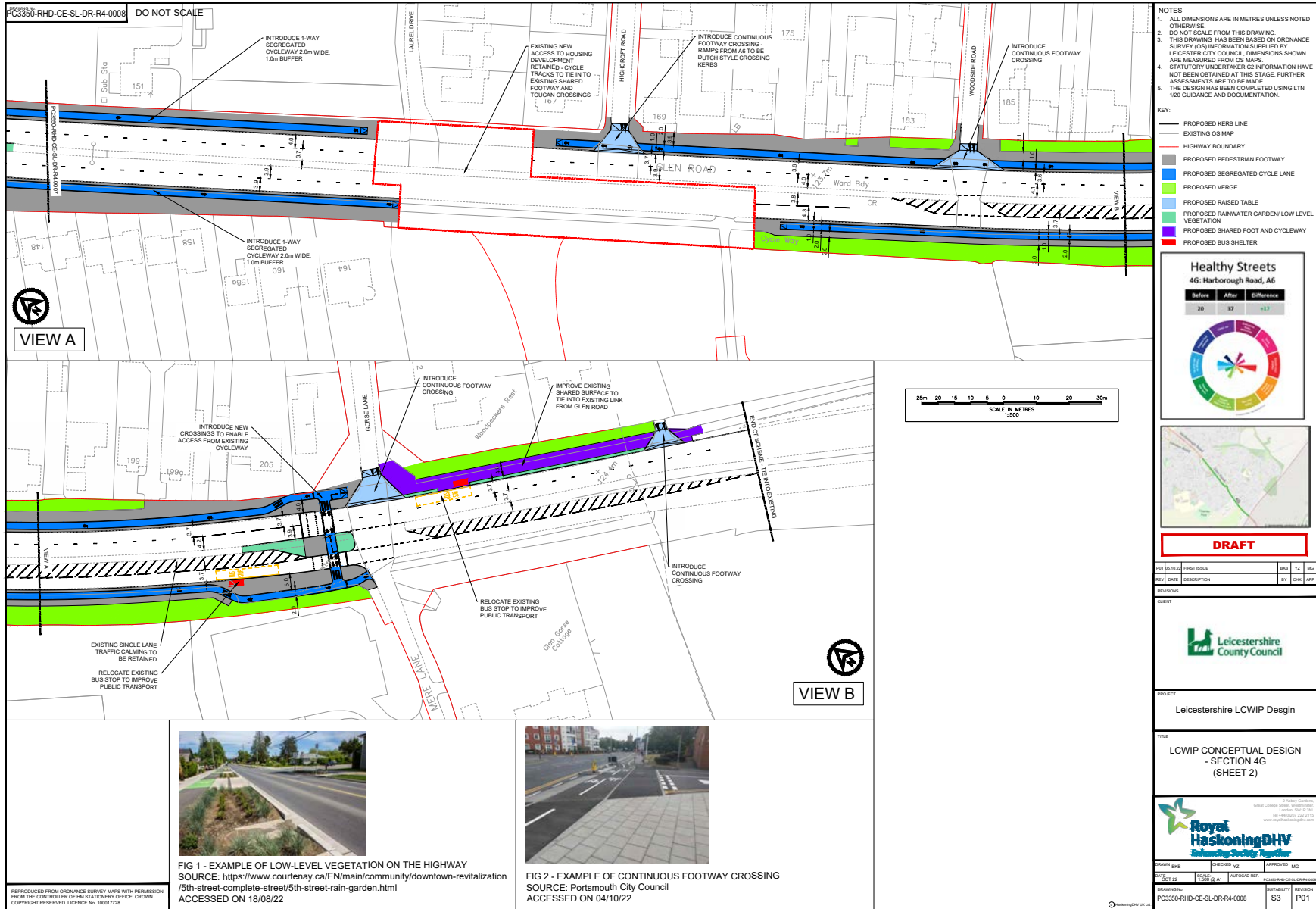


| | | | | | |
|-------------|-----------------------------|--------------|----|------|----------|
| PROJECT NO. | PC3350-RHD-CE-SL-DR-R4-0007 | REVISION NO. | S3 | DATE | 04/10/22 |
|-------------|-----------------------------|--------------|----|------|----------|

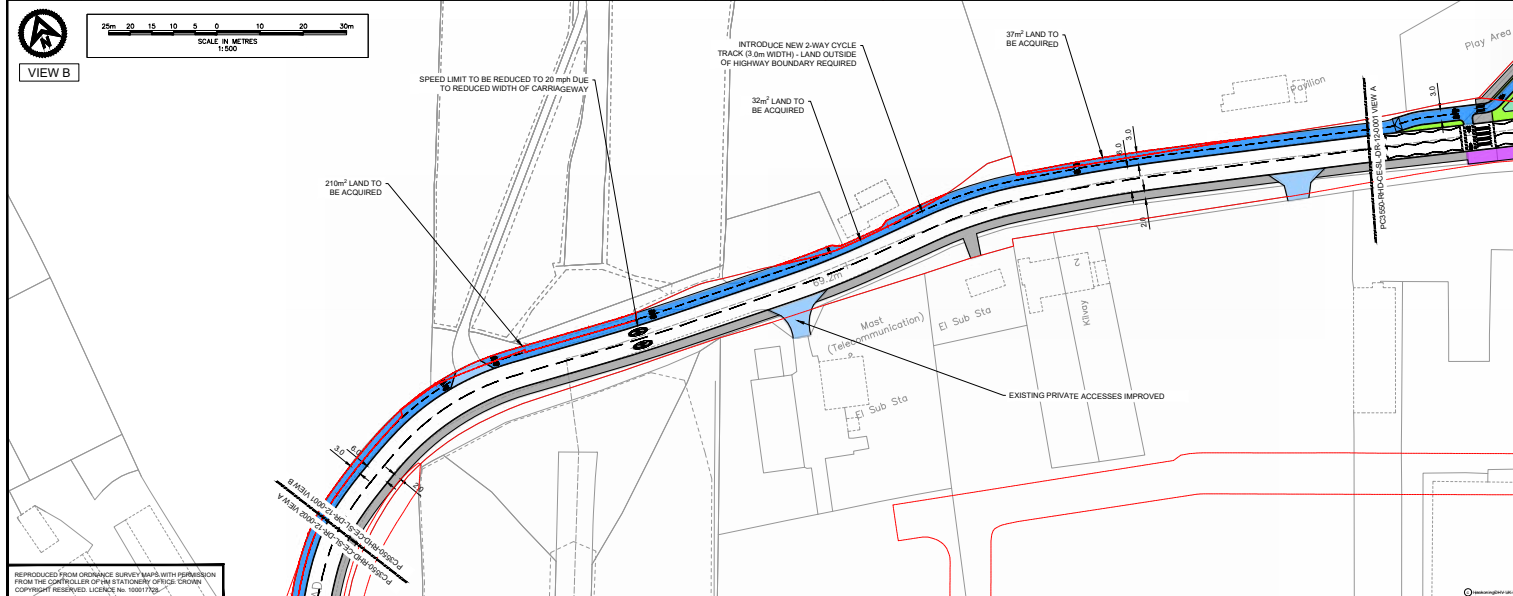
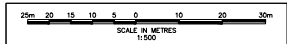
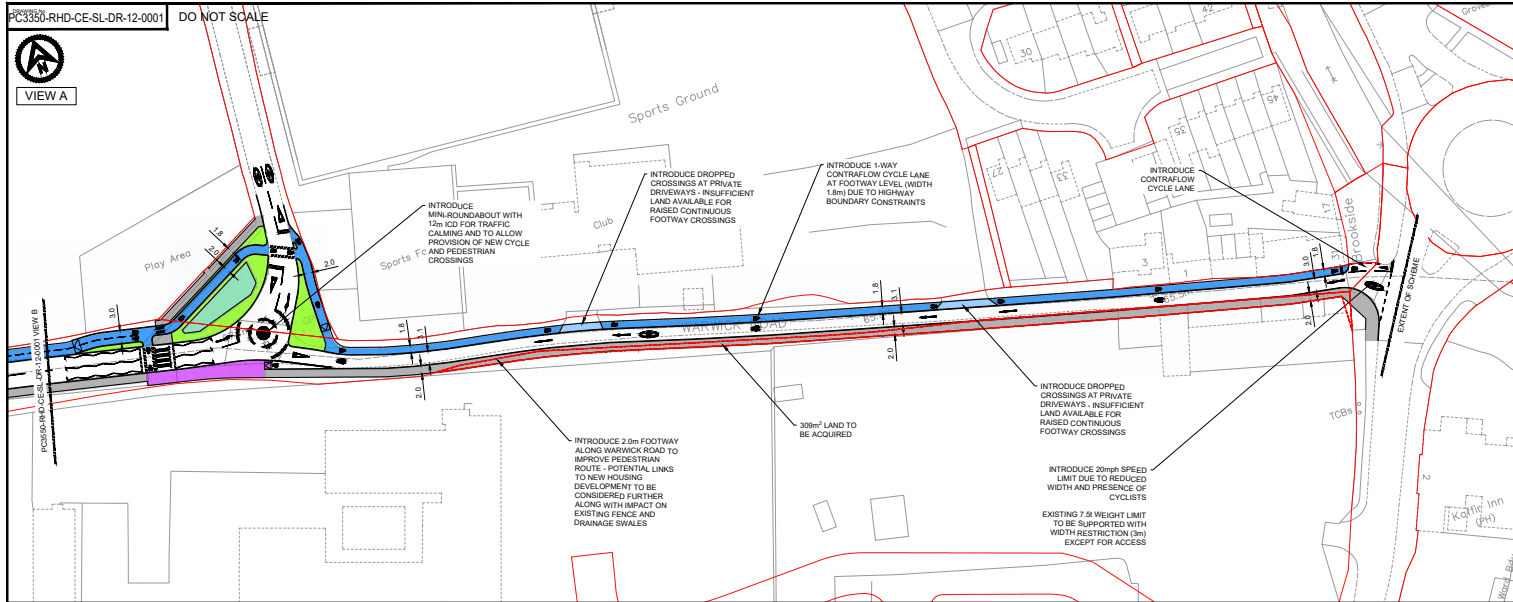
FIG 1 - EXAMPLE OF LOW-LEVEL VEGETATION ON THE HIGHWAY
SOURCE: <https://www.courtenay.ca/EN/main/community/downtown-revitalization/5th-street-complete-street/5th-street-rain-garden.html>
ACCESSED ON 18/08/22

FIG 2 - EXAMPLE OF CONTINUOUS FOOTWAY CROSSING
SOURCE: Portsmouth City Council
ACCESSED ON 04/10/22

REPRODUCED FROM ORDNANCE SURVEY MAPS WITH PERMISSION FROM THE CONTROLLER OF HIS STATIONARY OFFICE. ©CROWN COPYRIGHT RESERVED. LICENCE NO. 100077526

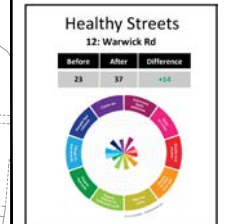


PC3350-RHD-CE-SL-DR-12-0001 DO NOT SCALE



- NOTES
1. ALL DIMENSIONS ARE IN METRES UNLESS NOTED OTHERWISE. DO NOT SCALE FROM THIS DRAWING.
 2. THIS DRAWING HAS BEEN BASED ON ORDNANCE SURVEY (OS) INFORMATION SUPPLIED BY LEICESTER CITY COUNCIL. DIMENSIONS SHOWN ARE MEASURED FROM OS MARKS.
 3. STATUTORY UNDERTAKER C2 INFORMATION HAVE NOT BEEN OBTAINED AT THIS STAGE. FURTHER ASSESSMENTS ARE TO BE MADE.
 4. THE DESIGN HAS BEEN COMPLETED USING LTN 1/20 GUIDANCE AND DOCUMENTATION.

- KEY:
- PROPOSED KERB LINE
 - EXISTING OS MAP
 - HIGHWAY BOUNDARY
 - PROPOSED PEDESTRIAN FOOTWAY
 - PROPOSED SEGREGATED CYCLE LANE
 - PROPOSED SHARED FOOT/CYCLEWAY
 - PROPOSED VERGE
 - PROPOSED RAISED TABLE
 - PROPOSED RAINWATER GARDEN/LOW LEVEL VEGETATION



DRAFT

| REV | DATE | DESCRIPTION | BY | CHK | APP |
|-----|----------|-------------|-----|-----|-----|
| 01 | 18.03.22 | FIRST ISSUE | HRB | MS | MS |

REVISIONS:



PROJECT
Leicestershire LCWIP Design

TITLE
LCWIP CONCEPTUAL DESIGN
SECTION 12
Sheet 1



| DATE | SCALE | PROJECT NO. | PROJECT NAME | PROJECT LOCATION |
|----------|------------|-----------------------------|--------------|------------------|
| 18.03.22 | 1:500 @ A1 | PC3350-RHD-CE-SL-DR-12-0001 | S3 | P01 |

